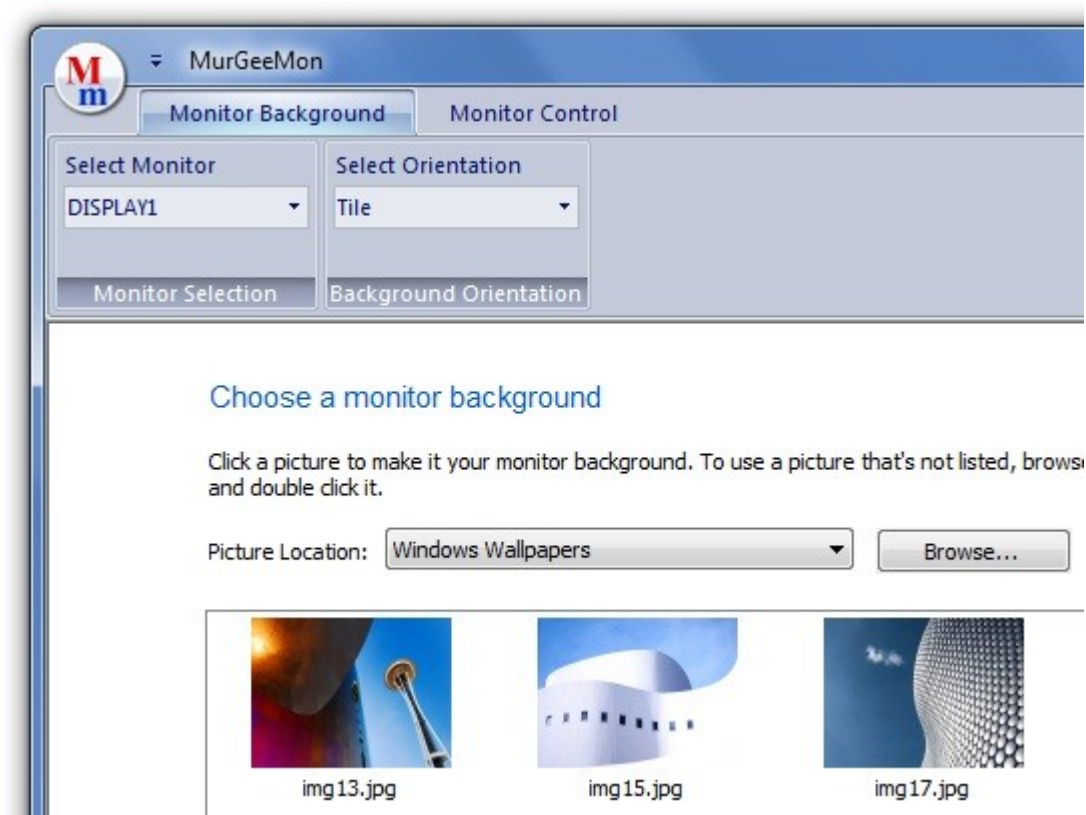


# MurGeeMon (A Dual Display Software Utility)

## Introduction to Dual Display Software Utility named MurGeeMon

MurGeeMon Software utility provides various useful features when using Dual Displays / Monitors connected to a computer. Set different wallpaper on primary and secondary monitor, control mouse cursor movements with hotkey, easily launch various control panel items related to monitors and much more in a small software utility. MurGeeMon is user friendly, has latest graphical user interface, easy to use and quick to install on Desktop / Laptop.



## MurGeeMon Features

MurGeeMon Software utility has feature rich graphical user interface where all available options can be easily accessed from the main window. The Main window opens with a ribbon interface having 2 tabs and each of the tab has corresponding features of the utility. Each of the tabs is described below.

### Monitor Background

The **Monitor Background** tab provides various features which allow to change an individual monitor background. A drop down combo allows to select the monitor for which the background has to be changed and another drop down allows to change the orientation of the new monitor background. When Monitor Background tab is active, display area of the application displays thumbnails of pictures and a single click on

any of the thumbnail will change the monitor background of selected orientation.

## **How to change background of Primary / Secondary Monitor**

Please do follow given below steps to change background of primary or secondary monitor in a dual monitor computer setup.

1. Download and install MurGeeMon Software Utility from <http://www.murgee.com/MurGeeMon/> .
2. Once installation is complete, have a look at the system tray, you would find a new system tray icon of MurGeeMon utility.
3. Double click on the MurGeeMon system tray icon or right click on the icon and select show.
4. Main Window of MurGeeMon utility is displayed.
5. Have a look at the top left of the dual display utility below **Monitor Background** tab and locate the combo **Select Monitor**.
6. From the list of Monitors, select the monitor for which you would like to change the background.
7. Now from the picture thumbnails, click on any of the thumbnail to set it as your monitor background.
8. When selecting monitor background you can change the Picture Location Combo to display other available images for the monitor background.
9. Once you are done selecting your monitor's background, click on OK to close the application or click on the close button of the application, you can also click on cancel button to revert to your original background.

**Note :** The Orientation combo will be populated with 3 available options (Tile, Fit to Monitor and Centre) when one monitor is connected to the computer. When more than one monitors are connected to the computer, only tile option will be available and you would be allowed to change individual monitor background by selecting the appropriate monitor and thumbnail as outlined above.

**Note :** The drop down box labeled **Select Monitor** displays names of monitors connected to the computer. In case you do connect more than 2 monitors to the computer, the drop down box will display first two monitor names only as MurGeeMon allows to change monitor background of at max two monitors connected to a computer.

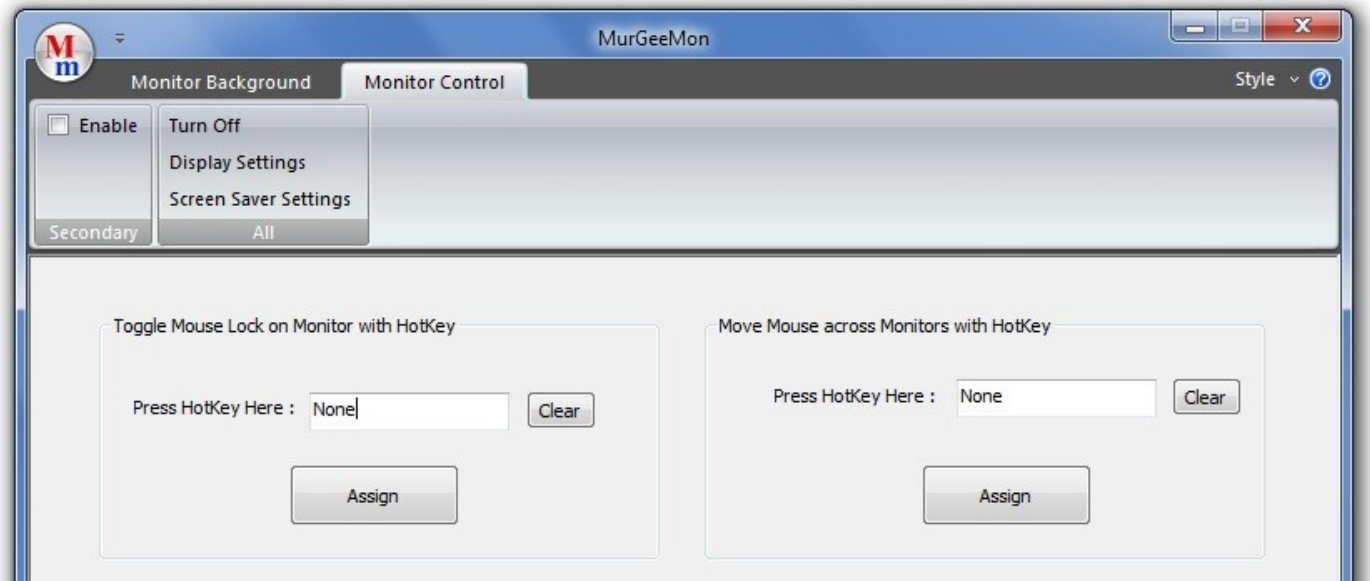
## **How to Select a Picture for Monitor Background from your Computer**

This section outlines the procedure to be followed to set a picture file as your primary / secondary monitor background . The procedure almost remains the same as described in the [section](#) above. The only difference being instead of selecting a thumbnail for the monitor background, just click on Browse button, locate a picture file and the Dual Display utility MurGeeMon will copy the selected file to it's own folder and will set it as selected monitor's (primary or secondary) background.

Any of the picture file browsed from a folder location for setting it as monitor background from the computer will be available for selection in the MurgeeMon picture location. The thumbnails (and the pictures for monitor background) come from pre defined folder locations. The content of a predefined folder can be viewed by selecting the predefined folder and clicking on browse button or by pointing windows explorer to the the folder location displayed in the bottom left pane.

## Monitor Control

The **Monitor Control** tab of the Dual Display Software utility allows to control various features of dual monitors connected to the computer. The tab also hosts many other useful features when using dual displays connected to the computer such as moving mouse across monitors, locking mouse to primary / secondary monitor easily and quickly. The features provided can be real time savers and can help you utilize the most of a dual display computer setup. Given below screenshot displays the Monitor Control Tab of MurGeeMon utility with checkbox to enable / disable secondary monitor and other buttons to control all monitors connected to the computer.



### Enable / Disable Secondary Monitor

The check box available at the top left corner of the Monitor Control tab serves two purposes. The state (checked / unchecked) of the check box displays whether the secondary monitor is enabled or not. In case the secondary monitor is enabled, the check box will be checked and in case secondary monitor is not in use or has not been added to the computer, then the check box will remain unchecked. The second purpose it serves is that you can enable / disable secondary monitor by checking or unchecking the **Enable** checkbox in the **Secondary** group of the Monitor Control Tab.

### Control Primary / Secondary Monitors

The group labeled **All** in the Monitor Control tab hosts 3 buttons. These three buttons can be useful to control all connected monitors to the computer. These buttons allows to control power state of the monitors connected to the computer, launch Display Settings and launch ScreenSaver Settings. This provides an easy way to launch useful monitor related control panel items from a single place irrespective of the operating system you are using (e.g. Windows XP, Windows Vista or Windows 7)

- The first button (labeled as **Turn Off**) in the group labeled **All** of the Monitor Control Tab can be used to turn off all monitors / display devices connected to your computer temporarily. All the monitors connected to your computer would be turned off after a short delay (few seconds) to give you time to leave the mouse cursor. This can be especially useful when you wish to leave your computer running, but do not wish to work on the computer actively and do not need computer monitors to remain ON. Whenever you wish to work again on your computer again, just move mouse cursor or press any key on keyboard and your monitors will turn on again so that you can work on them. One important thing to remember here is that in case some application / program simulates key press or mouse movement or your wireless mouse moves the cursor after you have turned off your monitors using the **Turn Off** button, your computer monitors / display devices will turn ON again.
- **Display Settings** button present in the group allows you to launch Display Settings of the Computer. This can be really handy and can save you time, searching for the display settings in the control panel. The Display Settings control panel item allows you to control all the display devices / monitor connected to your computer by controlling monitor resolution, display orientation (Landscape or Portrait) and monitor placement in your multiple monitor computer setup.
- **Screen Saver Settings** button allows you to launch Screen saver Settings of your Computer. Many Screen Savers are Multiple Monitor compliant (for example Bubbles Screen Saver from Microsoft) or in other words, the screen saver spans all your monitors, whereas some screen savers span only primary monitor of your multiple monitor computer setup.

## Features available in Display area of the Monitor Control tab

Display area of the Monitor Control tab provides other useful features when working with dual displays or multiple monitors connected to your computer. User input to the computer can be provided using Mouse or by using Keyboard. At times you may find working with some software / application is easy with Mouse cursor and sometimes you may find that working with keyboard is easy. Display area of the Monitor Control tab provides features that can help you work efficiently or quickly with keyboard or mouse cursor.

### Toggle Mouse Lock on Monitor with HotKey

This features allows you to **lock** your **mouse** cursor at the **monitor**. Let's say your mouse cursor is at primary monitor and for the time being you do not want your mouse cursor to go to secondary monitor or vice versa, then this functionality can be of use to you.

The feature allows you to toggle mouse lock at primary or secondary monitor by pressing a configurable HotKey. A HotKey is a user defined key combination that can invoke a specified functionality. In this case that specified functionality would be to toggle the mouse lock on the Monitor.

### How to Lock / Unlock Mouse Cursor on Primary / Secondary Monitor

- Download and install Dual Display utility named MurGeeMon from <http://www.murgee.com/>.
- Launch MurGeeMon from Desktop Shortcut or Programs Menu, by default the application is started in the System Tray and you would need to double click on the System Tray Icon of MurgeeMon to display the utility.
- Go to Monitor Control Tab and locate the *Toggle Mouse Lock on Monitor with Hotkey* control group.

- Press a unique / unused key combination (let's say F3 for this example) in the edit box provided next to the label *Press HotKey Here* and click on the **Assign** button.
- In case you are not presented an error message, then it means that now onwards whenever you press the HotKey (F3 in this example), your mouse cursor will be locked at the first press on the monitor on which mouse cursor is there and next time when you press the HotKey key combination, the mouse cursor will be unlocked from the Monitor.
- Example : Let's say your mouse cursor is at primary monitor and you have defined the Hotkey (F3 in this example), you press the HotKey (F3 in this example), your mouse cursor will be locked in the primary monitor and would not be allowed to leave the primary monitor by moving mouse towards the secondary monitor.
- Now when you wish to unlock your mouse cursor from primary monitor and wish to move the mouse cursor to the secondary monitor by moving mouse cursor towards the secondary monitor, just press the Hotkey (F3 in this example) again and your mouse cursor will be free to go to the secondary monitor.

This functionality works only until the application is running in the System Tray. Once you close the application by right clicking on the System Tray icon and selecting exit, your mouse cursor will be free to roam around. Mouse Lock functionality on a given monitor has been tested only on Dual Monitor Setup, however technically speaking it should work fine with more number of monitors connected in a Multi Monitor computer setup.

## Contact Us

Please do drop us an email at [support@murgee.com](mailto:support@murgee.com) in case you would like to comment on the application or provide feedback or you would like to say anything else.

## Our Website

Please do visit us at <http://www.murgee.com/> for more software utilities to save you time, energy and money.